

Homesite 22 - Plan 4B

2,295 sq. ft.

\$815,000



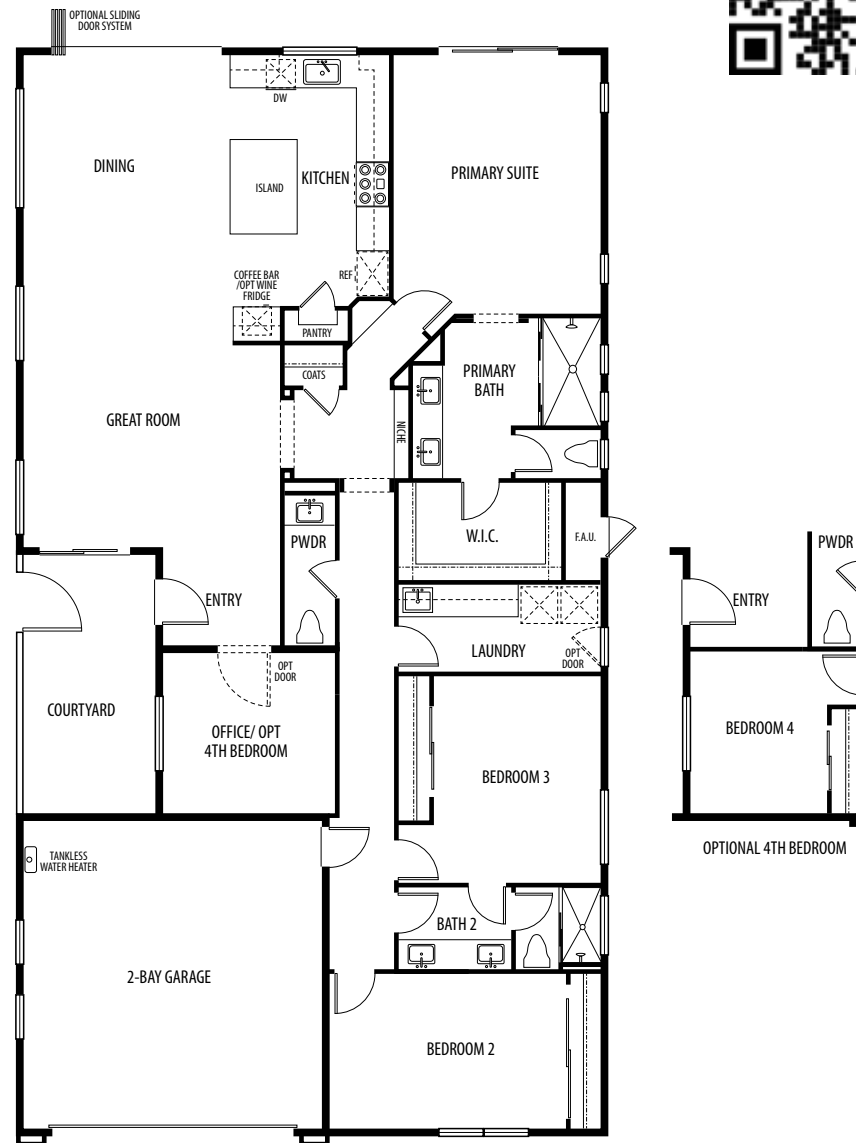
Single story home, 3 bedrooms, office, or optional 4th bedroom, 2½ baths, great room, dining area, two car garage.



Elevation A



Elevation B



This builder reserves the right in its sole discretion to make changes or modifications to prices, plans, specifications, materials, features, and colors without notice or obligation. Square footage dimensions are approximate and subject to change. Size, number and location of windows, front entries, solar panels and doors may vary per plan, location and/or elevation. All maps, plans, elevations, and renderings are artist concepts and not to scale. Views are not guaranteed and may be altered by subsequent development, construction, and landscaping growth. Product type is subject to availability. Photography and artwork do not reflect racial preferences. All homebuyers automatically become members of The Lumen Palm Springs Homeowner Association which maintains the common areas and ensures architectural standards. Sales by Ultimate New Home Sales & Marketing, Inc. DRE # 01194822

THE LUMEN



EQUAL HOUSING OPPORTUNITY